



SNACK STADIUM



INCLUDES:

5 PIECES



How to Assemble Your

SNACK STADIUM

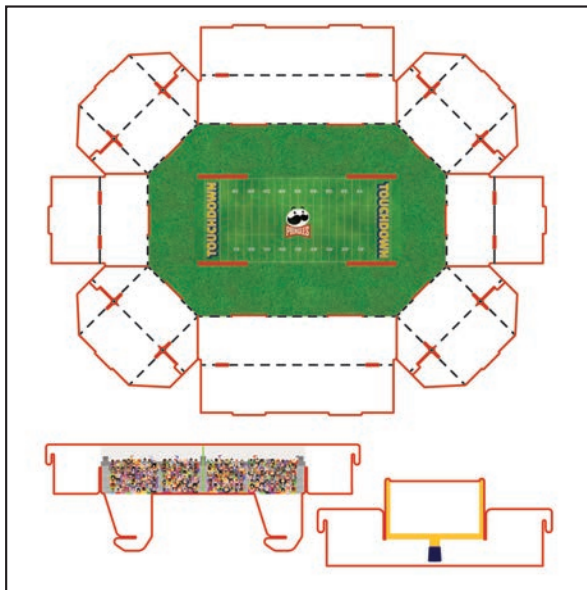


KEY

----- Fold Line

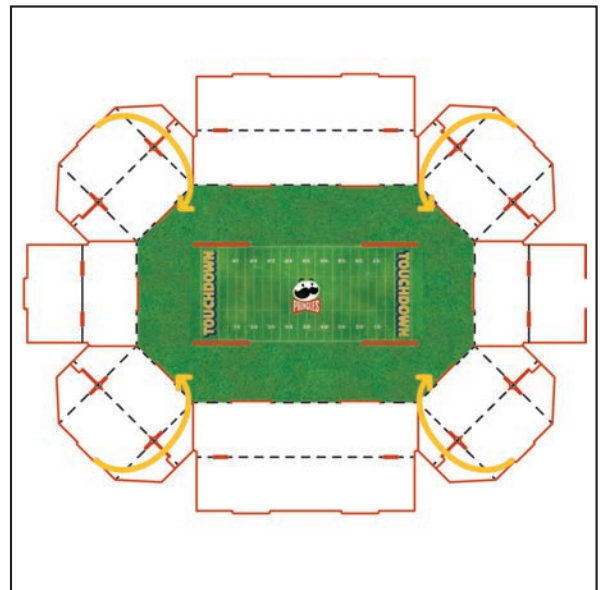
— Cut Line

— Directional Arrows



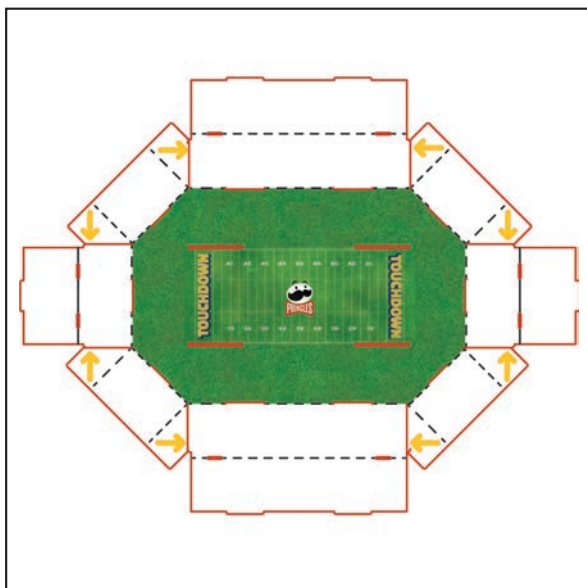
1

Unpack all stadium contents. Unfold and lay the main stadium body flat with grass side facing up, as shown.



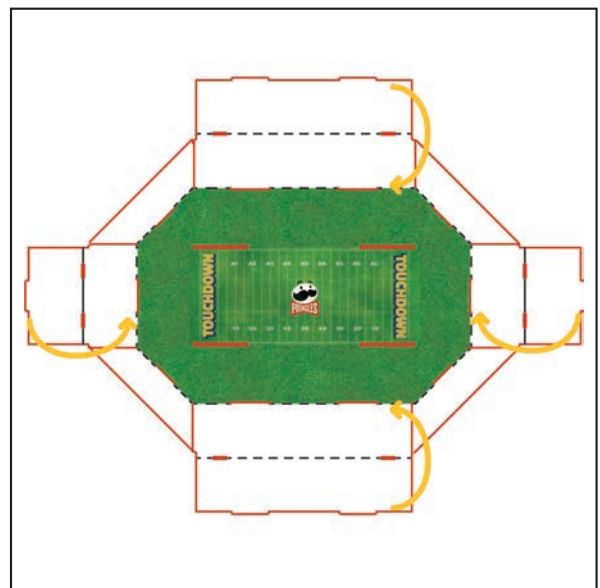
2

Fold corner piece inward, and tuck flap into the slot in base. Repeat on all 4 corners.



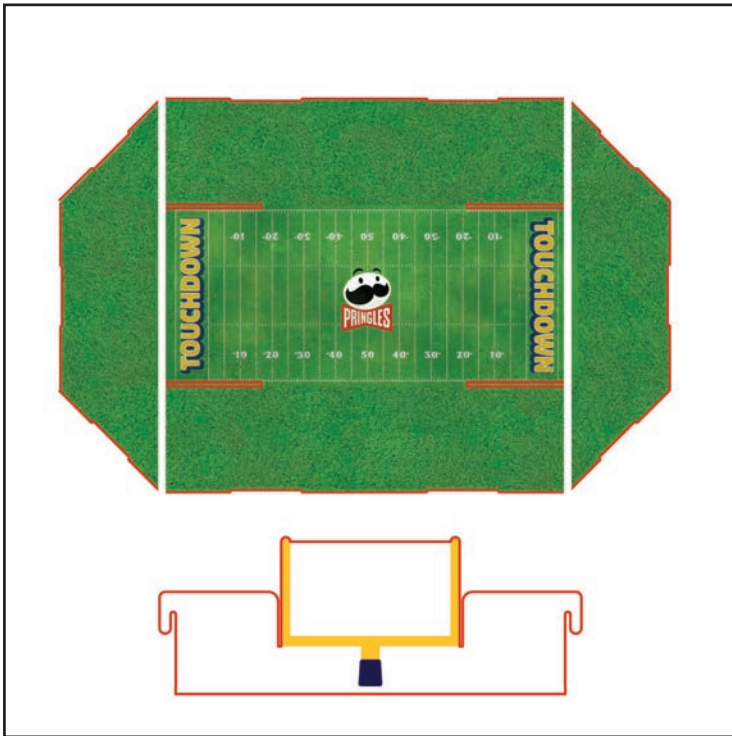
3

Fold all outer edges of corner pieces inward, and tuck flaps on top of corner edges into slots of corresponding side panels.



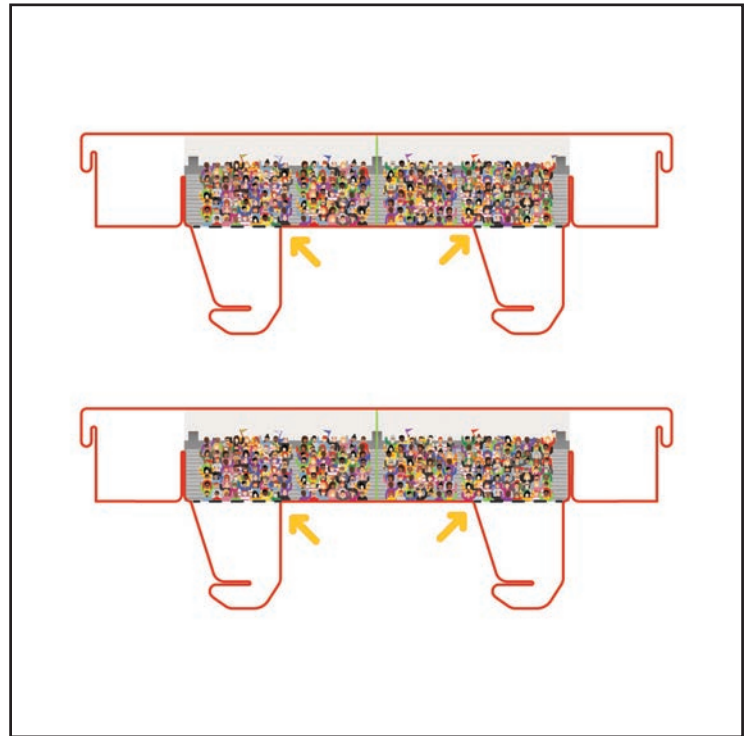
4

Fold all side pieces inward over corner edges, and tuck flaps into the slots in base.



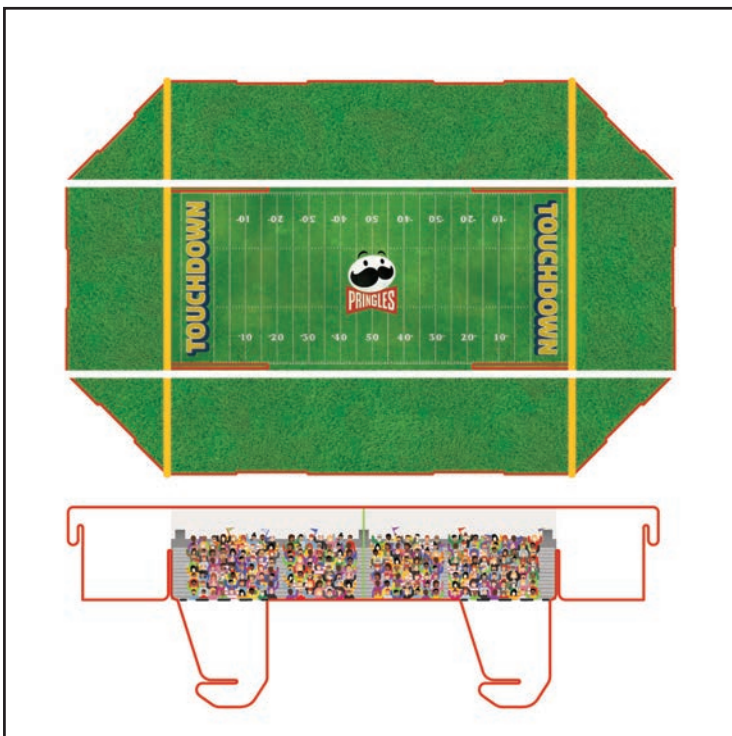
5

Place short scoreboard inserts where white lines are shown in picture. Hooks will slot over stadium edge to lock inserts into place.



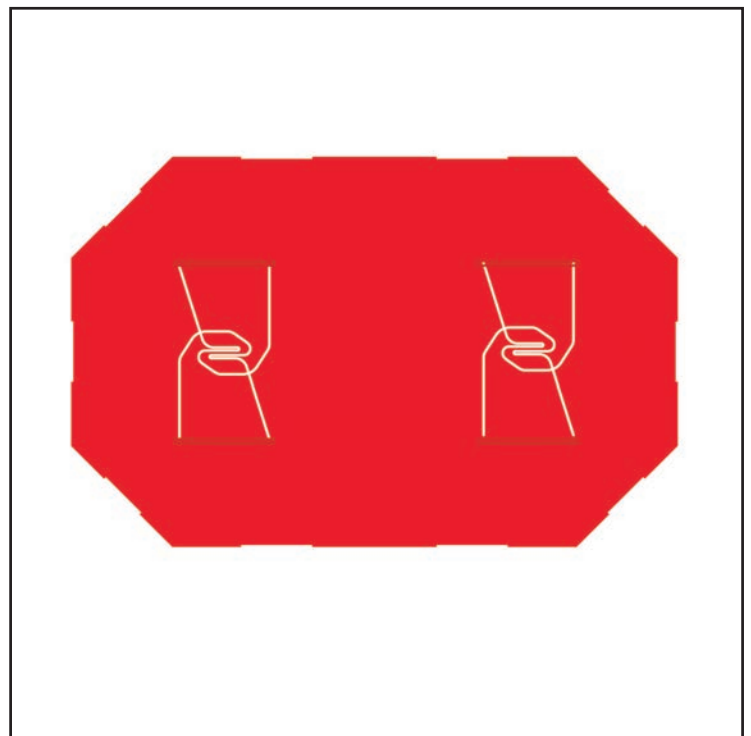
6

Prefold flaps of long inserts along the fold line.



7

Place long inserts where white lines are shown in picture with audience sides facing the field. Tuck prefolded flaps through slots in base. Hooks will slot over stadium edge to lock inserts into place.



8

Flip stadium over and lock bottom flaps together to finish.